



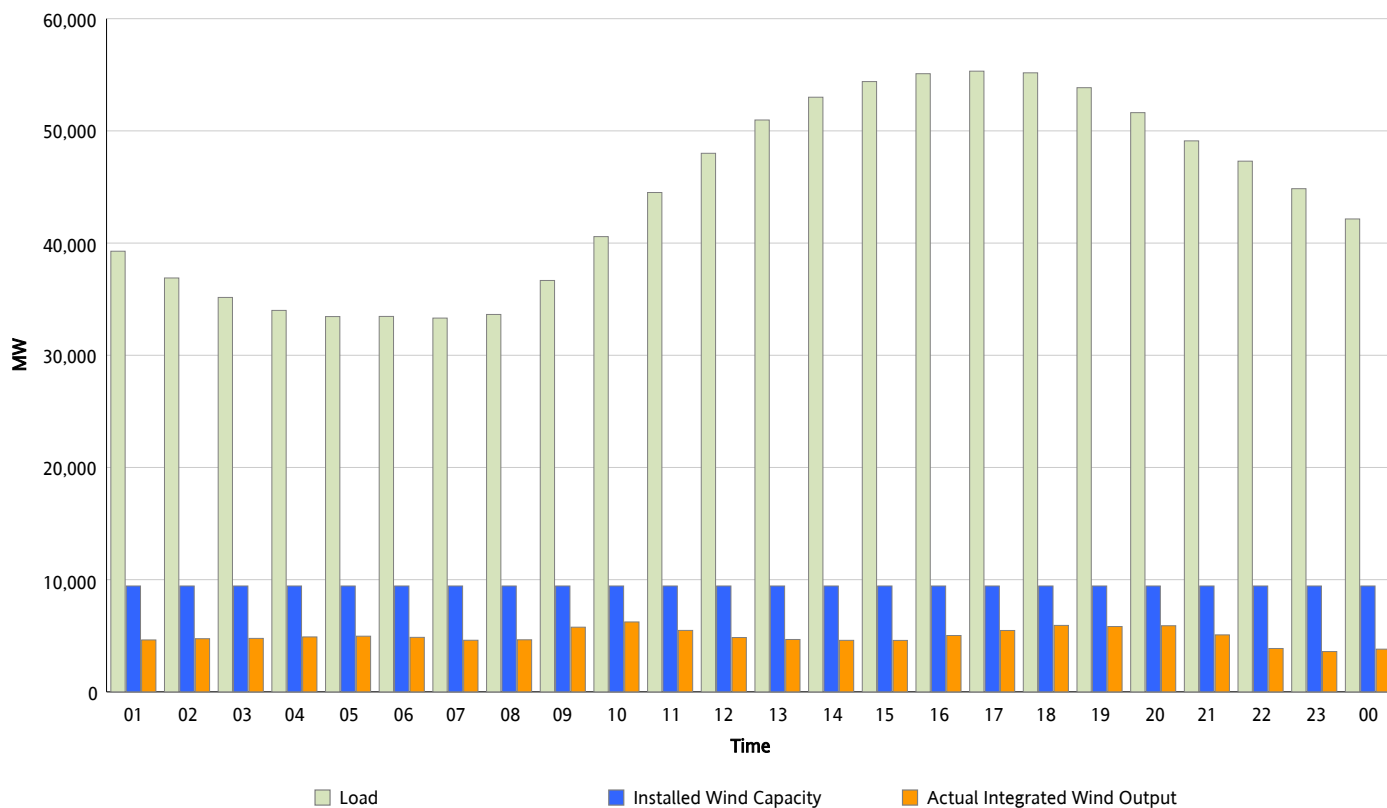
## ERCOT Grid Operations

### Wind Integration Report : 07/04/2012

Peak Load	55,323 MW
Load Peak Hour (HE)	17
Wind Over Peak	5,471 MW
Wind Record 06/19/12	8,368 MW
Max Wind Value*	6,411 MW
Wind Peak Time	09:07
Wind Integration %	16.36 %

#### Hourly Average Actual Load vs. Actual Wind Output

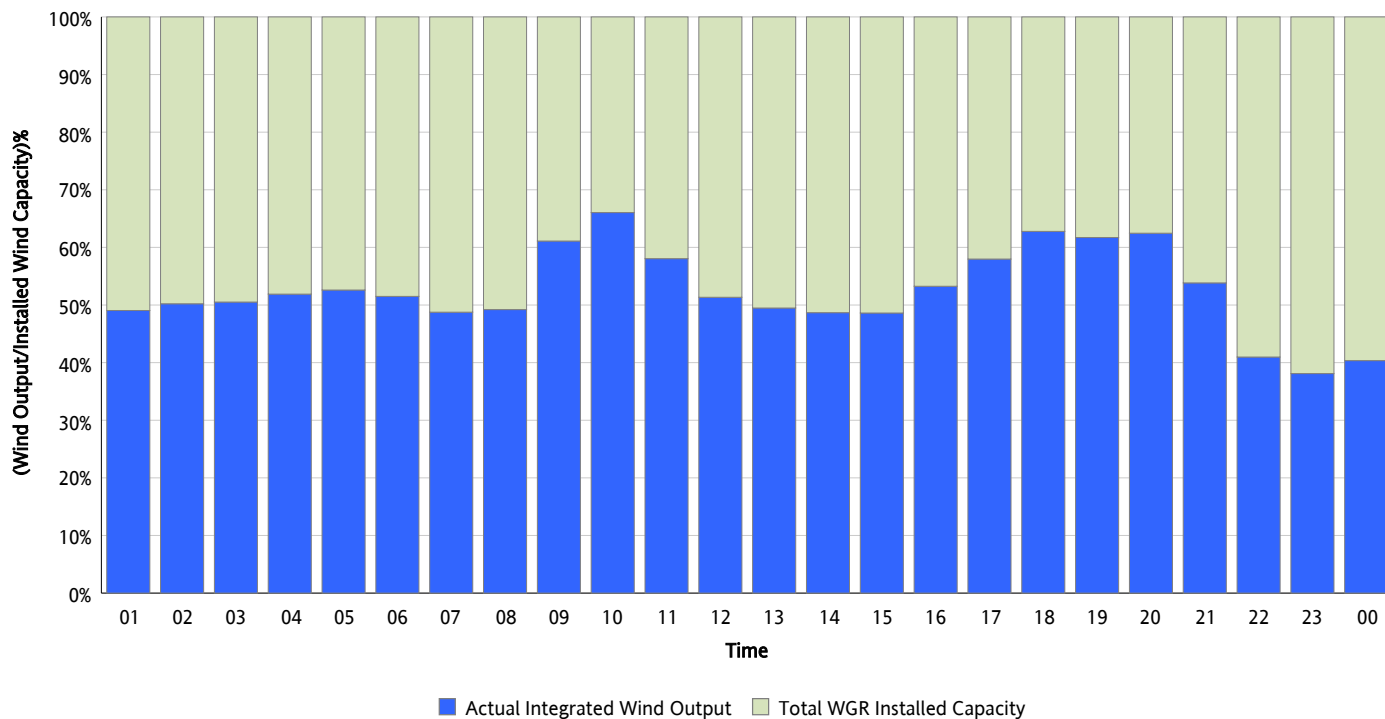
07/04/2012



\* Wind Record and Wind Max represent instantaneous values and the rest of the values are integrated over the hour

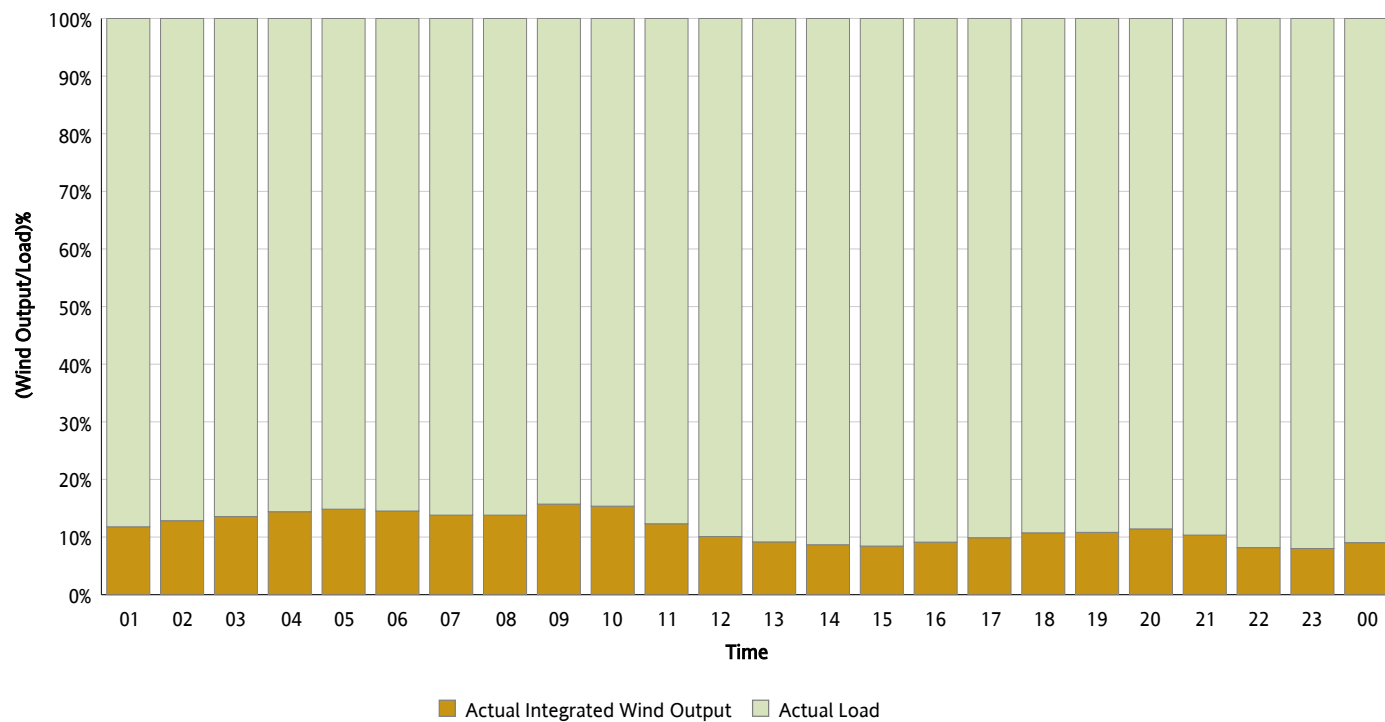
## Actual Wind Output as a Percentage of the Total Installed Wind Capacity

07/04/2012



## Actual Wind Output as a Percentage of the ERCOT Load

07/04/2012



## ERCOT Load vs. Actual Wind Output

06/27/2012 - 07/04/2012

